

**TotalRecall**IVR

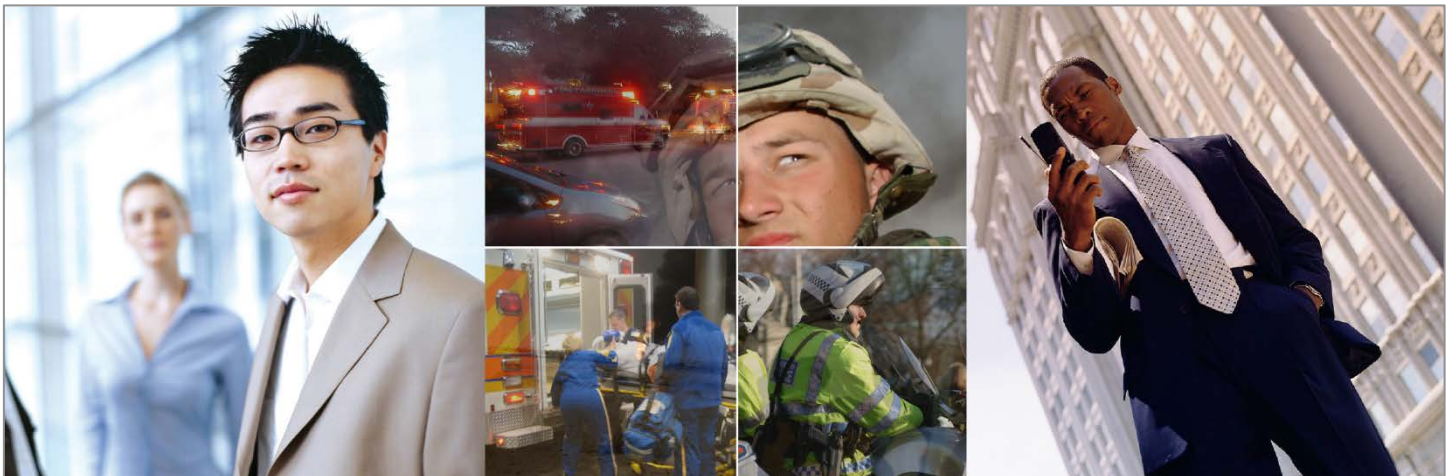
LinX **Omnia**



## Professional Audio Logging and Call Recording Systems

*VoIP : Radio : Analogue : ISDN : ED-137 : Consoles : DMR*

*High Capacity : Ultimate Reliability : Maximum Flexibility*



# Total Recall VR LinX Omnia

*The ultimate voice logging solution for mission-critical communications*



Total Recall VR **LinX Omnia** provides a professional, robust and highly configurable rack mounted voice logging solution for larger capacity, enterprise-critical analogue, VoIP, ED-137, DMR, radio and ISDN recording applications.

**LinX Omnia** is equally popular with enterprises, governments, public utilities (including Airports and Rail) and military across the globe.

The most powerful system in the Total Recall VR range, **LinX Omnia** offers unprecedented levels of hardware redundancy, reliability, and interface flexibility. When you need the best and most secure call recording system on the market, you need Total Recall VR **LinX Omnia**!

- ✓ 60 Simultaneous Analogue Channels;
- ✓ 60 Simultaneous IP/ED-137/DMR Channels;
- ✓ 60 Simultaneous ISDN Channels;
- ✓ 60 Simultaneous Analogue Channels PLUS an additional 60 IP/ED-137/DMR or ISDN Channels (in Hybrid Recording Mode).
- ✓ Up to 380,000 Hours On-board RAID-1 AV-GP 1TB SATA HDD Storage.
- ✓ Multiple hard drive options (AV-GP, Higher-Capacity and/or SSD HDD) for special installs or vehicle-mounted applications.
- ✓ 450 + 450W Dual Hot-Swap PSU.
- ✓ 220 (H) x 480 (W) x 420 (D) mm (5RU).
- ✓ Archive to CD/DVD/Blu-ray, USB devices, and Network Storage (NAS).
- ✓ Built-in 7" Colour LCD Control Panel with keypad.
- ✓ PC application licenses for 3 x PCs included.
- ✓ Seamless integration with major telephony, radio and console systems, including Tait, Hytera and Omnitronics.
- ✓ Used in some of the most demanding environments worldwide: Military, Vehicle-Mounted, Air Traffic Control recording (ATC), major Emergency Services (E-911) and more...



## Total Recall VR - The **Total** Solution to your Voice Logging Requirements

### **Professional, Flexible, Robust Voice Logging for Phone and Radio**

In an increasingly security conscious, litigious and results-driven world, call recording and monitoring is vital to meeting your safety, duty of care and management needs. Total Recall VR **LinX Omnia** is the fully featured, dedicated and professional voice logging system to match your requirements. Uncompromisingly reliable, and with flexible hybrid recording options, Total Recall VR **LinX Omnia** is perfect for recording, archiving, searching and replaying your critical phone, radio and console communications.

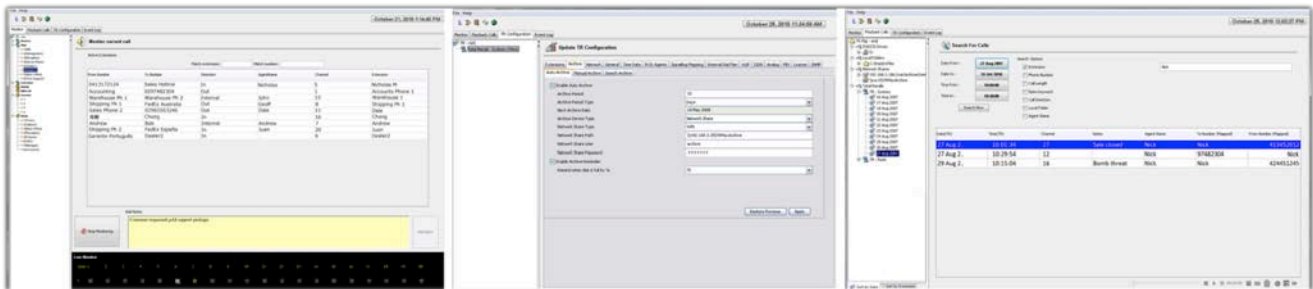
### **Fast & Convenient Access with Simple GUI and Navigation**

Live monitor, search and replay calls from the built in control panel on **LinX Omnia**, featuring simple navigation keys and a big, bright 165 x 100mm TFT LCD display. Your solution can be managed from the control panel via three menus (Logging, Search and Options) and four simple navigation keys. Call replay control keys (play/pause, fast forward, rewind, and stop) are also included. Alternatively, all unit functions and configuration can be managed via your network and our advanced PC software packages – 3 installation licenses are included at no additional cost with your Total Recall VR **LinX Omnia** system.

### **Reliable and Fault Tolerant, Multiple Long-Term Archive Options**

Total Recall VR **LinX Omnia** is custom engineered for voice logging, offering superior reliability compared to PC based systems. We combine numerous on-board hard drive storage options (including AV-GP, High-Capacity or SSD storage), together with the security, speed and reliability of an enterprise-grade UNIX operating system. Store up to 380,000 hours or 700,000 records (whichever comes first) of call recordings on board to RAID Hard Drive storage, and archive calls automatically or on-demand to inexpensive CD, DVD or Blu-ray media, network-attached storage or USB device.

### **Convenient and Powerful Windows PC Apps**



Three installation licenses for our PC applications are included with every Total Recall VR system. These can be used to provide basic configuration, live monitoring, search and replay functions from the convenience of your Windows PC, via a TCP/IP network. You can also copy calls from your Total Recall VR system or archive discs to your computer, email calls in MP3, WAV, or secure TRC format, and add searchable notes to calls in real time.

Alternatively you can take advantage of our more advanced software functions - highly configurable search & replay on TRVR systems and archives, multi-track waveform replay of calls, centralised continuous network archiving from one or multiple TRVR systems and/or simplified archive integrity checks & repair. Contact us (or your local TRVR reseller) for more information!

### **Record Everything – Combine Analogue and VoIP Telephones, Radios, RTP Streams, Intercoms and More...**

**LinX Omnia** can record up to 60 simultaneous analogue channels from any line-level audio source - telephones, 2-way radio, intercoms etc. Inputs are standard modular audio jacks that are compatible with a wide range of easily available accessories. Additionally, record up to 60 ISDN channels, 60 VoIP channels, ED-137 channels, RTP streams, DMR channels etc. in any combination.

Continuously live monitor by extension, or search and replay completed calls with ease. All functions are available via the built-in control panel, or from the comfort of your PC. Configurable Record-on-Demand functionality (PCI DSS compliant) gives users the option to record or discard current calls, or even to partially record calls if required. Record all calls, or between user-defined times.

Proven in thousands of installations worldwide, Total Recall VR is the professional and cost effective choice in voice logging systems and services, for all enterprise, government and military requirements.

# LinX Omnia Specifications:

## Analogue

Hi-Z FXS/FXO 2-wire interface.  
Caller ID detection: FSKR, DTMF.  
Digit detection: DTMF.

## VoIP, RoIP & AoIP

RJ45 (8P8C) connector.  
SIP over UDP (RFC3261, RFC2976, RFC2833).  
SDP (RFC3264).  
H.323 over UDP or TCP (ITU-T H.323, ITU-T H.225, ITU-T H.245).  
RTP (RFC 3550)  
EUROCAE ED-137  
SIPrec (RFC7865, RFC7866)  
Cicso BiB  
Tait VRP  
Hytera DMR  
Omnitronics IP  
Encoding method: G.711 (A or  $\mu$ -law), 8000Hz, 64Kbps, mono.

## ISDN

ISDN PRI (ITU-T Q.931, National ISDN 1 and 2, Nortel DMS 100, AT&T 4ESS, Lucent 5ESS, Euro ISDN)

## Voice Encoding

HQVQ, 8000Hz, 7.9Kbps, mono  
SPEEX Q8, 8000Hz, 15Kbps, mono  
AMBE, 3000Hz, 2.4Kbps  
MPEG Audio Layer-3 (MP3), 8000Hz, 24Kbps, mono  
G.711 A-law, 8000Hz, 64Kbps, mono  
G.711 U-law, 8000Hz, 64Kbps, mono

## Audio File Formats

Total Recall VR (.trc).  
Microsoft Wave (.wav).  
MPEG Audio Layer-3 (.mp3).

## Maximum Channel Capacity

*Single-Interface Mode:* 60 analogue channels, 60 ISDN Channels, or 60 IP Channels.

*Hybrid mode:* 60 analogue channels PLUS 60 simultaneous IP or ISDN recording channels, in any combination.

## Analogue Recording Trigger

Off-hook – 6 voltage levels: 30V, 25V, 20V, 15V, 10V and 5V.  
VOX – 6 signal levels: -20dB, -24dB, -28dB, -32dB, -36dB and -40dB.

## VoIP Recording Trigger

SIP session.  
H.245 call.  
Unicast RTP Stream.  
Multicast RTP Stream.

## ISDN Recording Trigger

Q.931 call

## Recording PIP Tone

1.4KHz. Analogue channels only.  
Channel & level selectable.

## On-board Storage

AV-GP SATA Hard Drive: 1 Million Hours MTBF, up to 380,000 hours of call storage or 700,000 records (whichever comes first)

## On-board Archive Device

CD/DVD/Blu-ray Drive (Supports CD-R, CD-RW, DVD-R, DVD+R, DVD+RW, BD-R and BD-RE media).

## External Archive Device

TCP/IP Network Drive: 250,000 records per archive session, up to storage limit.  
USB Storage Device (USB key, USB HDD).

## Network Interface

2 x 100Mbps Ethernet.  
Time Synchronisation via NTP.  
Alarm Interface via SNMP.  
SMDR Interface via TCP/IP.

## Audio Interface

Built in speaker.  
Line-out jack – 3.5mm.  
Headphone jack – 3.5mm.

## Construction

Zinc passivated steel with powder coated face.

## Display

165 x 100mm widescreen colour TFT backlit LCD display.

## Operating System

Linux CentOS 6.9.

## Dimensions & Weight

220H(5U) x 480W x 420D mm /25Kg.

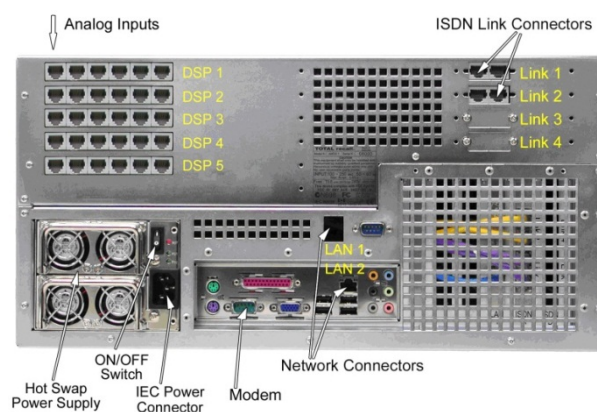
## Power Supply

Hot-Swap Auto Sensing 450W + 450W

*All Specifications Subject To Change Without Notice*



Total Recall VR LinX Omnia: Control Panel



Total Recall LinX Omnia: Rear View