



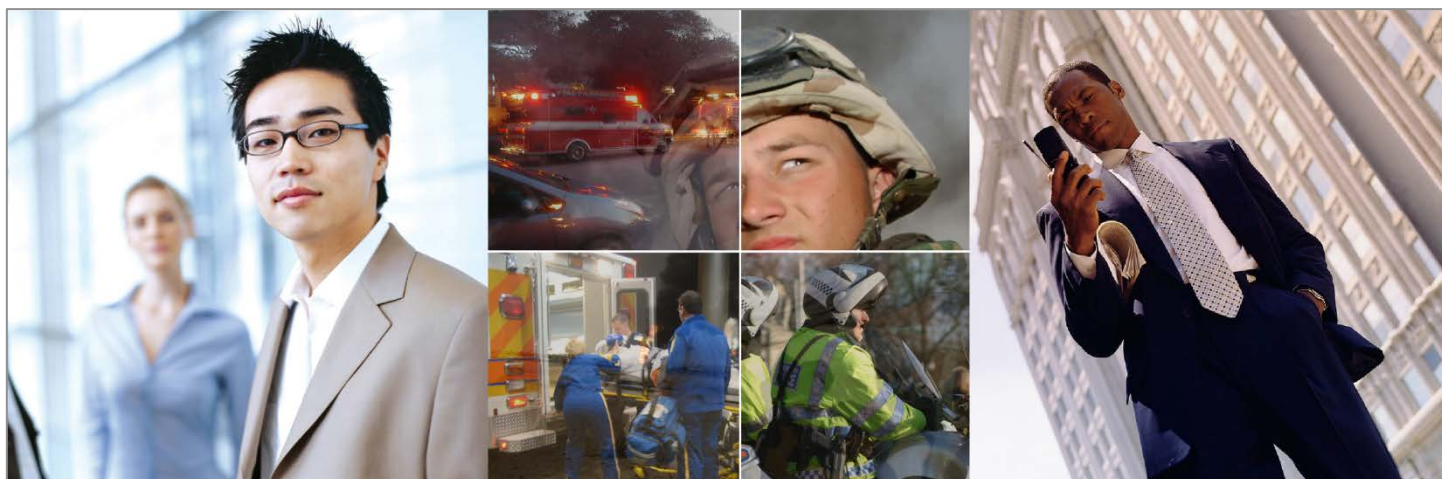
LinX **EDGE**



Next-Generation Audio Logging and Call Recording Systems

VoIP : ED-137 : RoIP: Consoles : DMR

High Capacity : Cost-Effective : Incredible Flexibility



Total Recall VR LinX

EDGE

Next-Generation IP Voice Logging Recorder. Powerful & Flexible Solution in a 1RU 'off-the-shelf' package



Total Recall VR LinX EDGE is the next generation of custom voice logging recorders from Prolancer. Combining the latest server hardware technology with proven Total Recall VR call recording software and the power of CentOS Linux, Total Recall VR LinX EDGE is the powerful and reliable voice logging solution for now and into the future.

This 1RU voice logging recorder supports up to an incredible 150 simultaneous VoIP/ED-137/DMR recording channels. With unmatched on-board call storage and functionality for a system of this size, Total Recall VR LinX EDGE is the next step in professional voice logging recorders.

- ✓ 150 Simultaneous VoIP/ED-137/DMR/IP channels.
- ✓ Seamless integration with major telephony, radio and console systems, including Tait, Hytera, Omnitronics & Cisco.
- ✓ Up to 900,000 call records on-board storage to RAID-1 dual SATA HDDs.
- ✓ SSD Hard Disk Drive option for even better performance and reliability, especially for vehicle mounted installations.
- ✓ 24 inch deep, 1RU enclosure
- ✓ Archive to Blu-ray, DVD, USB devices and Network Storage (NAS).
- ✓ PC application licenses for 3 x PCs included.
- ✓ Integrates with EUROCAE ED-137, Cisco BiB, SIPrec, SIP, H.323, RTP networks and more.
- ✓ Used in some of the most demanding environments worldwide: Military, Vehicle-Mounted, Air Traffic Control recording (ATC), major Emergency Services (E-911) and more...



Designed & Manufactured by Prolancer Pty Ltd

2/34a Olive Street, Kingsgrove 2208, NSW, AUSTRALIA

www.totalrecallvr.com | trvr@prolancer.com.au | +61 2 8060 3311 |

Technical Specifications – Total Recall VR LinX EDGE

System Platform	Non-proprietary, turn-key audio recording and call logging appliance. Embedded enterprise Linux operating system. SQL Database.
Security	Completely Administrator configurable per user, to channel and function level.
Hardware Platform	Intel motherboard with 64bit Intel CPU
Remote System Control	Total Recall VR PC software. 3 installation licences included. Connect to Total Recall VR LinX systems via LAN/WAN/VPN or via crossover network cable.
PC Requirements for Total Recall VR PC Apps	Windows 7, 8 or 10 (32 or 64 bit). 100GB Free HDD Space. 512MB RAM. Display that supports minimum 1024x768 resolution. Sound system (including speakers or headphones). Minimum 10mbps TCP/IP network interface. CD/DVD/Blu-ray optical drive. USB 2.0 port.
Audio Controls	Start, Stop, Pause, Fast Forward, Fast Reverse.
Configuration Utilities	Total Recall VR PC Software.
Audio Characteristics	Secure, proprietary format. HQVQ, 8000Hz, 7.9 Kbps, mono; SPEEX Q8, 8000Hz, 64Kbps, mono; G.711a-law, 8000Hz, 64Kbps, mono; G.711u-law, 8000Hz, 64Kbps, mono.
Recording Activation	SIP session, H.245 call; RTP stream (Unicast, Multicast or Broadcast), Tait VRP, Hytera HDAP, SIPrec, RTSP via UDP/TCP, EUROCAE ED-137.
Network	2 x 10/100/1000 Mbps Ethernet Ports. SMDR Interface via TCP/IP
Time Synchronisation	Network Time Protocol (NTP) via TCP/IP
VoIP Recording Interface	Passive recording via port mirroring to a range of SIP and H.323 based PaBXs, and SIP trunks; SIP, H.323, Unicast & Multicast RTP stream recording via SPAN Port. Active SIP recording. RTSP via UDP/TCP. EUROCAE ED-137. Cisco BiB.
Channel Capacities	VoIP: Up to 150 Simultaneous sessions.
Internal Storage	RAID-1 (dual) 1TB SATA AV-GP hard disk drives. Internal Storage for up to 900,000 call records.
Archive Device Options	Network Archiving (NAS), USB Flash Drive, USB HDD, Blu-ray Drive
Power Options	Universal 100-240VAC hot-swap, dual redundant power supply
Dimensions	24 inch deep 1Ru enclosure
Environmental Requirements	Operating Temperature: +0C (32F) to 40C (104F). Operating Humidity: 0-90% Relative Humidity, non-condensing.