

## **TETRA Panel Antenna**

### **Model : CSG 6384706-PN**

CSG 6384706-PN series high performance Panel antenna offers wide coverage with low side lobes for TETRA band. The antenna is protected from lightning by direct ground feature. These are generally used Wall mounted with brackets supplied with the Antenna for Indoor installations.

<b>PARAMETERS</b>	<b>SPECIFICATIONS</b>			
Frequency Range	380 - 400 MHz	400 - 420 MHz	410 - 430 MHz	440 - 460 MHz
Bandwidth	20 MHz			
Gain	6.0 ±1.0 dBi			
VSWR	≤ 2.0 : 1			
Horizontal Beamwidth	85°			
Vertical Beamwidth	120°			
Polarization	Vertical			
Max. Power	100 Watt			
Impedance	50 Ω			
Connector	N (F)			
Weather Proofing	IP 65			
Application	Indoor			
Dimensions (Approx.)	210 x 180 x 43 mm			
Weight (Approx.)	410 gram			



*Note: Mounting Hardware and Brackets are supplied with Antenna*

**WE ALSO UNDERTAKE DESIGNS PER YOUR REQUIREMENT**

# CEILING MOUNT ANTENNA

Model : CSG 6384702-CMN

The CSG 6384702-CMN series Ceiling mount antenna is a compact antenna to provide optimum In-Building DAS coverage in UHF / TETRA band.

A highly efficient wideband element capable of supporting 380-470MHz is assembled under the antenna radome. These antennas are supplied in 20 MHz sub-bands tuned for best VSWR. These require one mounting hole for installation but as an option additional screw fixing holes located beneath the rotating valance is offered. The antenna can be fitted onto both thick and thin ceiling tiles.

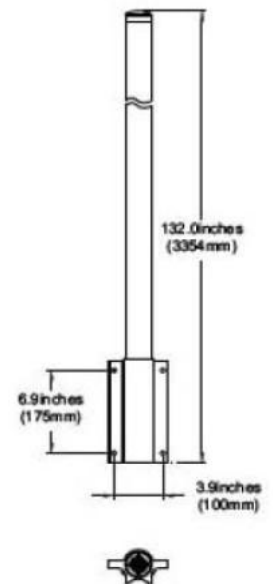
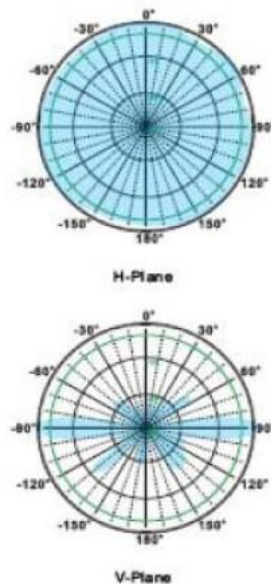
PARAMETERS	SPECIFICATIONS			
	380 - 400 MHz	400 - 420 MHz	410 - 430 MHz	440 - 460 MHz
Frequency Range	380 - 400 MHz	400 - 420 MHz	410 - 430 MHz	440 - 460 MHz
Bandwidth	20 MHz			
Gain	2.0 dBi			
VSWR	≤ 2 : 1			
Horizontal Beamwidth	360°			
Vertical Beamwidth	62°			
Polarization	Vertical			
Max. Power	100 Watt			
Impedance	50 Ω			
Connector	N(F)			
Weather Proofing	IP 65			
Dimensions (Approx.)	Φ 190 x 82 mm			
Weight (Approx.)	0.4 kg			
Application	Indoor			
Relative Humidity	5 % ~ 95 %			
Operating Temperature	-40 °C ~ +65 °C			



# Omni Directional Antenna

## CSG 64511 ODN

PARAMETERS	SPECIFICATIONS
Frequency Band	450 – 470 MHz
Gain	11.0 dBi
VSWR	≤ 1.5: 1
Horizontal Beamwidth	360°
Vertical Beamwidth	11°
Polarization	Vertical
Max. Power	250 Watt
Impedance	50Ω
Connector	N(Female)
Radom Material	Fiberglass
Reflector Material	Brass
Length	3.35 Mtr
Diameter (Approx)	Φ50 mm
Weight (Approx)	5.35 kg
Max. wind velocity	210 km/hr
Mounting Hardware	Φ50 ~ Φ80 mm
Operating Temperature	-40°C ~ +65°C



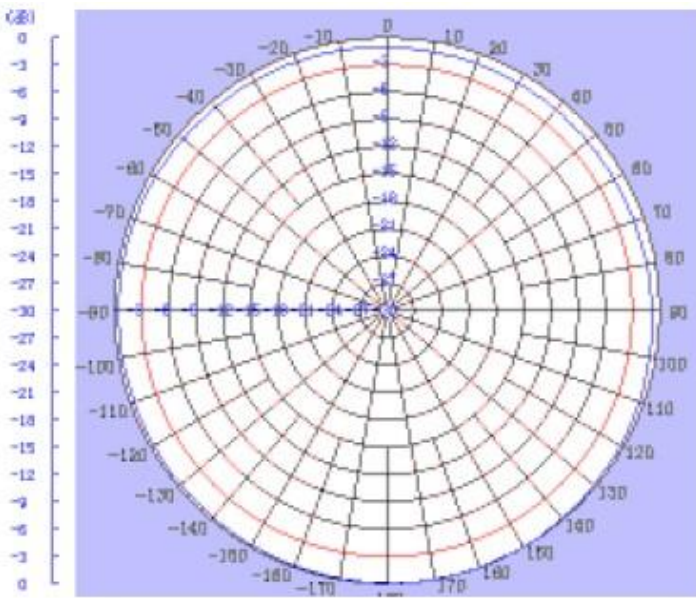
*Note: Mounting Hardware and Brackets are supplied with Antenna*

***WE ALSO UNDERTAKE DESIGNS PER YOUR REQUIREMENT***

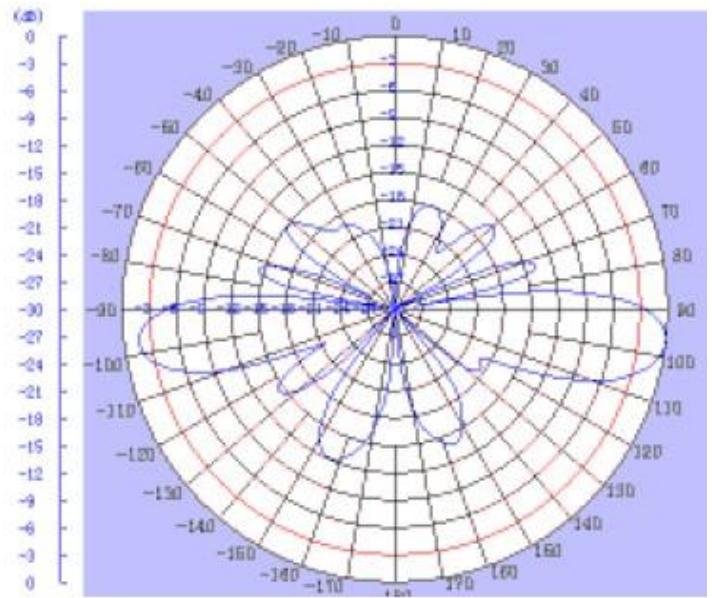
## UHF/TETRA Omni Antenna CSG 637507 ONX

PARAMETERS	SPECIFICATIONS
Frequency Range	375 – 490 MHz
Bandwidth	40 MHz
Gain	7.2 dBi
Beamwidth	E : 18°
Electrical Downtilt	8°
Polarization	Vertical
VSWR	≤ 1.5: 1
Max. Power	250 Watt
Impedance	50Ω
Lightning Protection	DC Grounded
Connector	N(Female) or Customized
Rated wind velocity	6 Mtr/s
Dimension (Approx)	Φ70 X 2835 mm
Weight (Approx)	4.4 kg (Exclude the Bracket)
Radome	Fiberglass
Pole Diameter	Φ50 ~ Φ70 mm

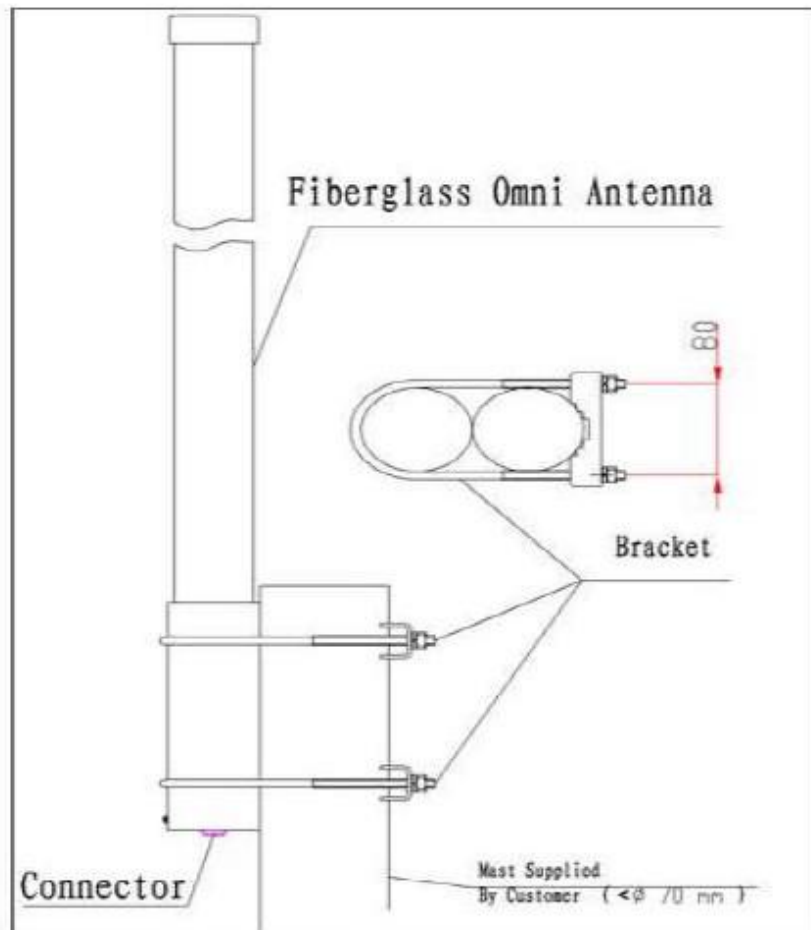




H Plane



E Plane



*Note: Mounting Hardware and Brackets are supplied with Antenna*

***WE ALSO UNDERTAKE DESIGNS PER YOUR REQUIREMENT***

## Broadband Ceiling Antenna CSG 63502 CMN

PARAMETERS	SPECIFICATIONS
Frequency Range	350 ~ 600 MHz
Bandwidth	250 MHz
Gain	2.0 dBi
VSWR	$\leq 2.5 : 1$
Polarization	Vertical
Max. Power	50 Watt
Impedance	50 $\Omega$
Connector	N (F)
Dimensions (Approx.)	160 x 135 x 5 mm
Weight (Approx.)	109 grams



*Note: Mounting Hardware and Brackets are supplied with Antenna*

***WE ALSO UNDERTAKE DESIGNS PER YOUR REQUIREMENT***

## TETRA Panel Antenna CSG 645006 PN

PARAMETERS	SPECIFICATIONS
Frequency Range	380 ~ 400 / 410 ~ 430 MHz 450 ~ 470 / 470 ~ 490 MHz
Bandwidth	20 MHz
Gain	6.0 dBi
VSWR	≤ 2.0 : 1
Horizontal Beamwidth	85°
Vertical Beamwidth	120°
Polarization	Vertical
Max. Power	100 Watt
Impedance	50 Ω
Connector	N (F)
Dimensions (Approx.)	240 x 230 x 50 mm
Weight (Approx.)	0.35 kg

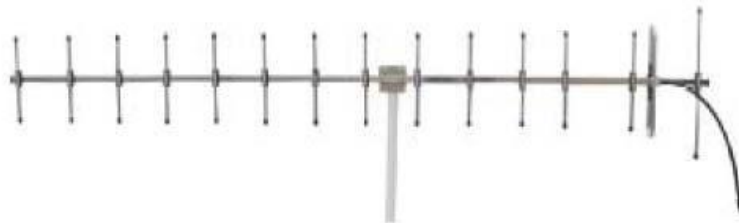


*Note: Mounting Hardware and Brackets are supplied with Antenna*

**WE ALSO UNDERTAKE DESIGNS PER YOUR REQUIREMENT**

## 400 MHz Yagi Antenna CSG 63813 YN

PARAMETERS	SPECIFICATIONS
Frequency Range	370 ~ 400 MHz
Bandwidth	30 MHz
Gain	13.0 dBi
VSWR	≤ 1.5 : 1
Horizontal Beamwidth	30°
Vertical Beamwidth	30°
Front to Back Ratio	≥ 18 dB
Polarization	Vertical or Horizontal
Max. Power	100 Watt
Impedance	50 Ω
Connector	N(F)
Length (Approx.)	2.41 mtr
Weight (Approx.)	1.20 kg
Mounting Clamp suitable for Fiber Pipe	33 mm (ID)
Mounting Hardware	S.S.
Finish	Olive Green / Black



**Note:** Mounting Hardware and Brackets are supplied with Antenna

**WE ALSO UNDERTAKE DESIGNS PER YOUR REQUIREMENT**



## 400 MHz Yagi Antenna CSG 63811 YN

PARAMETERS	SPECIFICATIONS
Frequency Range	450 ~ 470 MHz
Bandwidth	20 MHz
Gain	11.0 dBi
VSWR	≤ 1.5 : 1
Horizontal Beamwidth	48°
Vertical Beamwidth	43°
Front to Back Ratio	≥ 16 dB
Polarization	Vertical or Horizontal
Max. Power	100 Watt
Impedance	50 Ω
Connector	FME(F)
Lightning Protection	DC Ground
Cable Length	10 mtr
Dimensions (Approx.)	810 mm
Weight (Approx.)	1.38 kg
Rated Wind Velocity	210 km/hr
Working Temperature	-40 °C ~ +60 °C



**Note:** Mounting Hardware and Brackets are supplied with Antenna

**WE ALSO UNDERTAKE DESIGNS PER YOUR REQUIREMENT**