

## Multi-Band Omni Antenna CSG 68008X ODN

PARAMETERS	SPECIFICATIONS	
Frequency Range	806 ~ 960 MHz	1710 ~ 2500 MHz
Gain	6.0 dBi	8.0 dBi
VSWR	$\leq 1.5 : 1$	$\leq 1.8 : 1$
Vertical Beam width	40°	20°
Polarization	Vertical	
Max. Power	50 Watt	
Impedance	50 $\Omega$	
Connector	N(F)	
Size (Approx.)	$\Phi$ 7.6 x 60 cm	
Weight (Approx)	1.30 Kg	

### Applications:

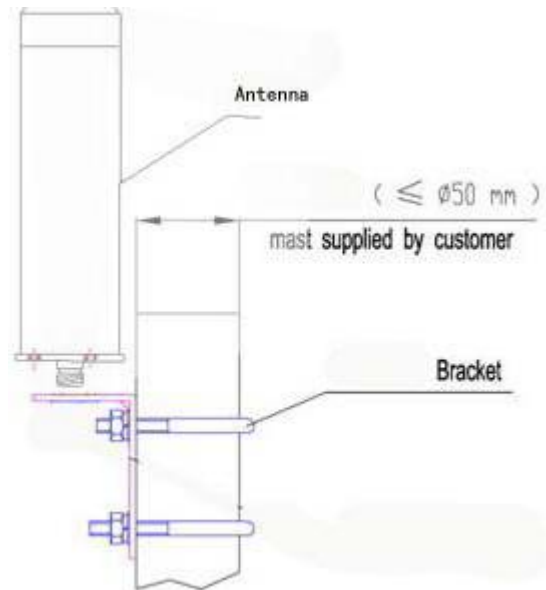
- CDMA / GSM / 3G / WLAN

### Features:

- Compact Size
- Low VSWR, Broadband
- N-Female or customized



### Installation Diagram:

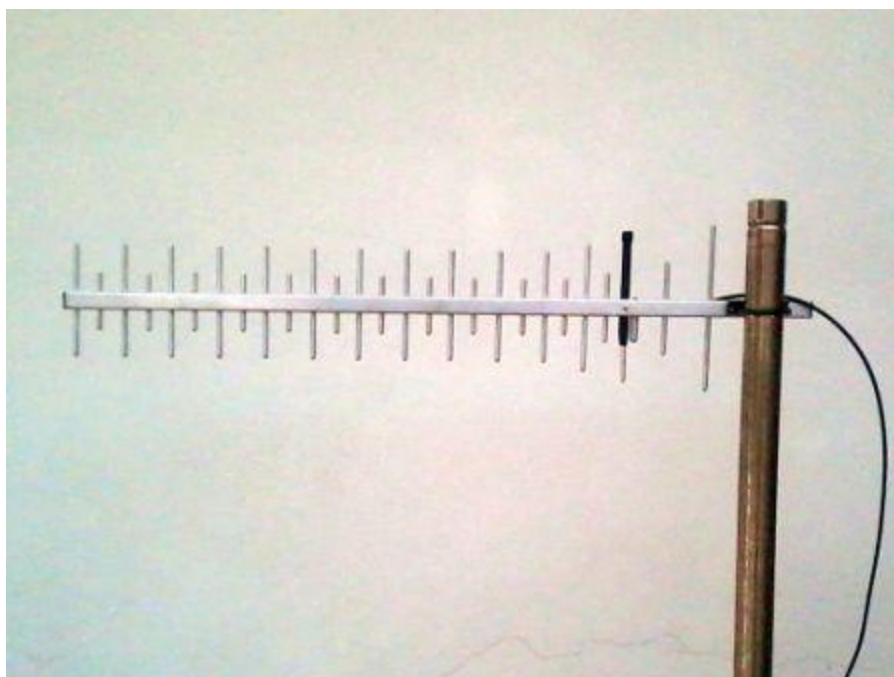


**Note:** Mounting Hardware and Brackets are supplied with Antenna

**WE ALSO UNDERTAKE DESIGNS PER YOUR REQUIREMENT**

## Multi-Band Yagi Antenna CSG 68015 YSX

PARAMETERS	SPECIFICATIONS
Frequency Range	824 ~ 960 / 1710 ~ 2170 MHz
Gain	15.0 dBi
VSWR	$\leq 2.5 : 1$
Horizontal Beam width	40°
Vertical Beam width	42°
Front to Back Ratio	$\geq 22$ dB
Polarization	Vertical or Horizontal
Feed Power Handling	10 Watt
Impedance	50 $\Omega$
Cable	10 meter LMR 200
Connector	SMA(M)
No. of Elements	26 Elements & 1 Dipole
Dimensions (L x W x H)	880 x 210 x 20 mm
Weight (Approx. Including Bracket)	1600 grams




**Note:** Mounting Hardware and Brackets are supplied with Antenna


**WE ALSO UNDERTAKE DESIGNS PER YOUR REQUIREMENT**

## Dual Band Yagi Antenna CSG 69014 YN

PARAMETERS	SPECIFICATIONS
Frequency Range	824 ~ 960 MHz
Gain	14.0 dBi
VSWR	≤ 1.5 : 1
Half Power Beamwidth	45°
Front to Back Ratio	≥ 20 dB
Polarization	Vertical or Horizontal
Max. Power	150 Watt
Impedance	50 Ω
Connector	SMA(F)
Structure	12 Elements
Length (Approx.)	770 mm
Weight (Approx.)	1.00 kg



CELLULAR  
ANTENNA  
SOLUTIONS



CSG  
NETWORKS

GSM / UMTS 14.0 dBi YAGI ANTENNA

DESCRIPTION	FEATURES	SPECIFICATIONS	
REN 69014 YN is a powerful 14.0 dBi gain directional antenna covering the GSM & UMTS 900 MHz cellular band. Its high gain performance affords exceptional cellular signal coverage.  The antenna comes with direct 10 mtr LMR 200 cable and SMA Male connector along with set of cable ties for ease of installation.  Significantly improves the cellular signals within home, workplace, cottages...	<input checked="" type="checkbox"/> Compact <input checked="" type="checkbox"/> Long Range <input checked="" type="checkbox"/> Light weight Aluminum construction <input checked="" type="checkbox"/> Easy to install <input checked="" type="checkbox"/> Improves mobile coverage	Frequency : 824 ~ 960 MHz / Gain : 14.0 dBi VSWR : < 1.5 : 1 H-plane Beamwidth : 34° F/B Ratio : > 18 dB Length : 77 cms	
MOUNTING		1 x U type clamp with bracket suitable for 1.25 inch dia pole  10 mtr LMR 200 cable & SMA Male Conductor	
PACKAGING		Cardboard box packaging, one antenna per pack, Gross weight 810 grams.	

**Note:** Mounting Hardware and Brackets are supplied with Antenna

**WE ALSO UNDERTAKE DESIGNS PER YOUR REQUIREMENT**

## Multi-Band Panel Antenna

### CSG 68007 / 10 PSX-5

PARAMETERS	SPECIFICATIONS
Frequency Range	806 ~ 960 / 1710 ~ 2500 MHz
Gain	7.0 / 10.0 dBi
VSWR	≤ 2.0 : 1
Horizontal Beam width	45°
Vertical Beam width	88°
Front to Back Ratio	≥ 15 dB
Polarization	Vertical
Max. Power	50 Watt
Impedance	50 Ω
Cable & Connector	5 meter Cable with SMA(M)
Radom Material	UV-Protected ABS
Lightning Protection	Direct Ground
Dimensions (Approx.)	210 x 180 x 44 mm
Weight (Approx.)	0.610 kg
Mounting	Glass & Wall mount with up-down & sideways adjustments



**Note:** Mounting Hardware and Brackets are supplied with Antenna

**WE ALSO UNDERTAKE DESIGNS PER YOUR REQUIREMENT**



# Quad band Combination Omni Antenna

## CSG 6800X QS

### 2 x GSM 900 MHz :

PARAMETERS	SPECIFICATIONS
Frequency Range	890 ~ 960 MHz
Gain	3.0 dBi
VSWR	≤ 1.5 : 1
Vertical Beamwidth	85°
Polarization	Vertical
Max. Power	50 Watt
Impedance	50 Ω
Connector	2 x SMA(M)

### GPS :

PARAMETERS	SPECIFICATIONS
Frequency Range	1575 ± 4 MHz
Gain	5 ± 0.5 dBi
Gain Amplification	≥ 28 dB
VSWR	≤ 1.5 : 1
Polarization	RHCP
Voltage	3 ~ 5 V
Current	≤ 20 mA
GPS Cable	LMR 200
GPS Connector	SMA(M)
Radome Material	ABS
Cable Loss	≤ 0.25 dB/m @ 400 MHz ≤ 0.37 dB/m @ 900 MHz ≤ 0.66 dB/m @ 2.5 GHz ≤ 0.90 dB/m @ 3.5 GHz
GSM / Wi-Fi Cable Length	6 mtr
Colour	Black
Installation	Bolt and Nuts
Weight (Approx)	3.50 kg
Dimensions (Approx.)	30 x 30 x 14 cm

### Wi-Fi :

PARAMETERS	SPECIFICATIONS
Frequency Range	2400 ~ 2485 MHz
Gain	5.0 dBi
VSWR	≤ 2 : 1
Vertical Beamwidth	62°
Polarization	Vertical
Max. Power	50 Watt
Impedance	50 Ω
Connector	RP-SMA(M)



**Note:** Mounting Hardware and Brackets are supplied with Antenna

**WE ALSO UNDERTAKE DESIGNS PER YOUR REQUIREMENT**

## GSM / UMTS Magnetic Mount Antenna

### CSG 68003X MMS

PARAMETERS	SPECIFICATIONS
Frequency Range	824 ~ 960 / 1710 ~ 2200 MHz
Gain	3.5 dBi
VSWR	≤ 1.5 : 1
Horizontal Beamwidth	360°
Polarization	Vertical
Max. Input Power	60 Watt
Impedance	50 Ω
Cable	RG 174
Connector	Huawei Connector, SMA(M), Sierra Wireless Connector
Antenna Length (Approx.)	90 mm
Weight	0.15 Kgs
Mounting	Magnetic Base
Colour	Black
Working Temperature	-20 °C ~ +55 °C



**Note:** Mounting Hardware and Brackets are supplied with Antenna

**WE ALSO UNDERTAKE DESIGNS PER YOUR REQUIREMENT**

## GSM / UMTS Magnetic Mount Antenna

### CSG 68005X MMS

PARAMETERS	SPECIFICATIONS
Frequency Range	824 ~ 960 / 1710 ~ 2200 MHz
Gain	5.0 dBi
VSWR	≤ 1.5 : 1
Horizontal Beamwidth	360°
Polarization	Vertical
Max. Input Power	60 Watt
Impedance	50 Ω
Cable	RG 174
Connector	Huawei Connector, SMA(M), Sierra Wireless Connector
Antenna Length (Approx.)	270 mm
Weight	0.20 Kgs
Mounting	Magnetic Base
Colour	Black
Working Temperature	-20 °C ~ +55 °C



**Note:** Mounting Hardware and Brackets are supplied with Antenna

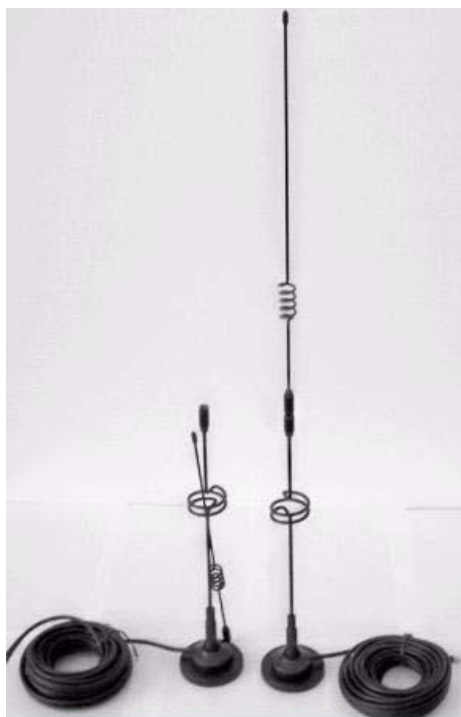
**WE ALSO UNDERTAKE DESIGNS PER YOUR REQUIREMENT**



## GSM / UMTS Magnetic Mount Antenna

### CSG 68009X MMS

PARAMETERS	SPECIFICATIONS
Frequency Range	824 ~ 960 / 1710 ~ 2200 MHz
Gain	9.0 dBi
VSWR	≤ 1.5 : 1
Horizontal Beamwidth	360°
Polarization	Vertical
Max. Input Power	60 Watt
Impedance	50 Ω
Cable	RG 174
Connector	Huawei Connector, SMA(M), Sierra Wireless Connector
Antenna Length (Approx.)	720 mm
Weight	0.35 Kgs
Mounting	Magnetic Base
Colour	Black
Working Temperature	-20 °C ~ +55 °C



**Note:** Mounting Hardware and Brackets are supplied with Antenna

**WE ALSO UNDERTAKE DESIGNS PER YOUR REQUIREMENT**

## Indoor Clip Mount Laptop 3G Antenna CSG 68003X CL

PARAMETERS	SPECIFICATIONS
Frequency Range	800 / 900 / 1800 / 1900 / 2200 MHz
Gain	2.8 dBi
VSWR	≤ 2.5 : 1
Horizontal Beamwidth	360°
Polarization	Vertical
Max. Power	10 Watt
Impedance	50 Ω
Cable	50 cm, RG 174
Connector	MC Card, SMA(M), FME(F)
Lightning Protection	Direct Ground
Length (Approx.)	170 mm
Weight (Approx.)	0.30 kg

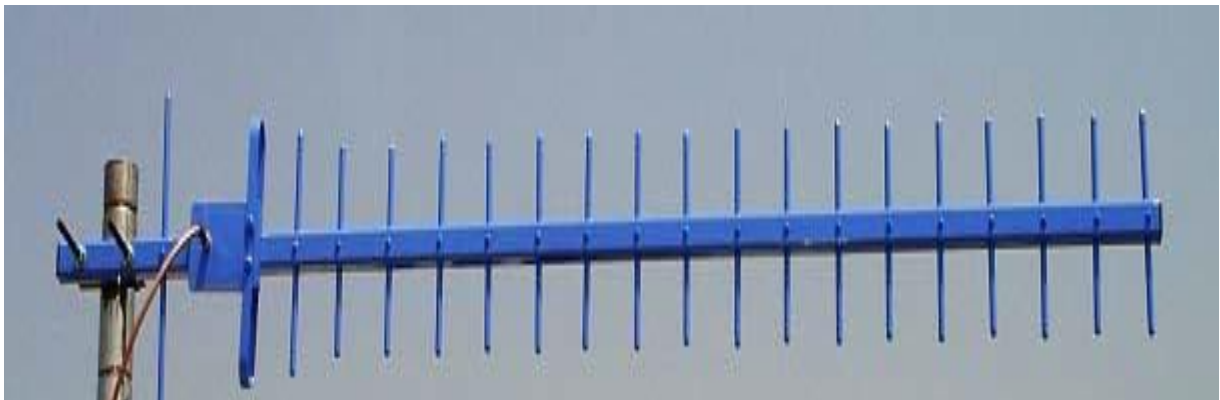


**Note:** Mounting Hardware and Brackets are supplied with Antenna

**WE ALSO UNDERTAKE DESIGNS PER YOUR REQUIREMENT**

## Dual Band Yagi Antenna CSG 69018 YN

PARAMETERS	SPECIFICATIONS
Frequency Range	824 ~ 960 MHz
Gain	18.0 dBi
VSWR	≤ 1.5 : 1
Horizontal Beam width	25°
Vertical Beam width	23°
Front to Back Ratio	≥ 18 dB
Polarization	Vertical or Horizontal
Max. Power	100 Watt
Impedance	50 Ω
Cable	10 meter LMR 200
Connector	SMA(M)
Housing Material	Aluminum
Lightning Protection	DC Ground
Length (Approx.)	1150 mm
Weight (Approx.)	1.30 kg
Rated Wind Velocity	210 km/hr
Relative Humidity	5 % ~ 95 %
Operating Temperature	-20 °C ~ +55 °C



**Note:** Mounting Hardware and Brackets are supplied with Antenna

**WE ALSO UNDERTAKE DESIGNS PER YOUR REQUIREMENT**

## Multi-Band Yagi Antenna CSG 68011 YSX

PARAMETERS	SPECIFICATIONS
Frequency Range	824 ~ 960 MHz 1710 ~ 2170 MHz
Gain	≥ 10.0 dBi @ 900 MHz ≥ 9.0 dBi @ 2000 MHz
VSWR	≤ 2.5 : 1
Horizontal Beam width	40°
Vertical Beam width	35°
Front to Back Ratio	≥ 20 dB
Polarization	Vertical or Horizontal
Max. Power	10 Watt
Impedance	50 Ω
Cable	7.0 / 10.0 meter LMR 200
Connector	SMA(M)
Lightning Protection	Direct Ground
No. of Elements	16
Length (Approx.) of the Boom	540 mm
Weight (Approx.) c/w Mounting Bracket	900 grams
Rated Wind Velocity	240 km/hr
Operating Temperature	-40 °C ~ +60 °C

**Note: Gain is inclusive of 7.0 / 10.0 meter long LMR 200 Cable**



**Note: Mounting Hardware and Brackets are supplied with Antenna**

**WE ALSO UNDERTAKE DESIGNS PER YOUR REQUIREMENT**



## Multi-Band Ceiling Mount Antenna CSG 68005X CMN

PARAMETERS	SPECIFICATIONS
Frequency Range	806 ~ 960 / 1710 ~ 2500 MHz
Gain	5.5 dBi
VSWR	≤ 1.5 : 1
Horizontal Beamwidth	130° @ 900 MHz 90° @ 1710 ~ 2500 MHz
Vertical Beamwidth	70° @ 900 MHz 80° @ 1710 ~ 2500 MHz
Front to Back Ratio	13.5 / 15.0 dB
Polarization	Vertical
Max. Power	50 Watt
Impedance	50 Ω
Connector	N(F)
Radome Material	UV-Protected ABS
Lightning Protection	DC Ground
Diameter (Approx.)	Φ 160 mm
Depth (Approx.)	85 mm
Weight (Approx.)	0.250 kg



**Note:** Mounting Hardware and Brackets are supplied with Antenna

**WE ALSO UNDERTAKE DESIGNS PER YOUR REQUIREMENT**

## Multi-Band Magnetic Mount Omni Antenna CSG 68005X ODNM

PARAMETERS	SPECIFICATIONS
Frequency Range	806 ~ 960 / 1710 ~ 2500 MHz
Gain	5.5 dBi
VSWR	$\leq 1.5 : 1$
Polarization	Vertical
Max. Power	100 Watt
Impedance	50 $\Omega$
Connector	FME, N, SMA
Size (Approx.)	$\Phi$ 108 x 150 mm
Mounting	Magnetic Mount
Operating Temperature	-40 °C ~ +60 °C



**Note:** Mounting Hardware and Brackets are supplied with Antenna

**WE ALSO UNDERTAKE DESIGNS PER YOUR REQUIREMENT**

## Multi-Band Omni Antenna CSG 68005X ODN

PARAMETERS	SPECIFICATIONS
Frequency Range	806 ~ 960 / 1700 ~ 2500 MHz
Gain	4.0 / 5.0 dBi
VSWR	$\leq 1.5 : 1$
Horizontal Beam width	360°
Vertical Beam width	18°
Polarization	Vertical
Max. Power	100 Watt
Impedance	50 $\Omega$
Connector	N(F)
Radom Material	Fiberglass
Dimensions (Approx.)	$\Phi$ 100 x 130 mm
Weight (Approx.)	0.260 kg
Mounting	Pole Mount



**Note:** Mounting Hardware and Brackets are supplied with Antenna

**WE ALSO UNDERTAKE DESIGNS PER YOUR REQUIREMENT**

## Multi-Band Rubber Duck Terminal Antenna CSG 68004X RDS

PARAMETERS	SPECIFICATIONS
Frequency Range	824 ~ 2170 / 2400 ~ 2483 / 5150 ~ 5250 / 5725 ~ 5850 MHz
Gain	4.5 dBi
VSWR	$\leq 2 : 1$
Polarization	Vertical
Max. Power	50 Watt
Impedance	50 $\Omega$
Connector	SMA(M)
Dimensions (Approx.)	$\Phi$ 21 x 150 mm
Weight (Approx.)	30 grams
Max. Wind Velocity	210 km/hr



**Note:** Mounting Hardware and Brackets are supplied with Antenna

**WE ALSO UNDERTAKE DESIGNS PER YOUR REQUIREMENT**



## Multi-Band Window Antenna

### CSG 68003XW MMS

PARAMETERS	SPECIFICATIONS
Frequency Range	800 / 900 / 1800 / 1900 / 2200 MHz
Gain (Including the Cable Loss)	3.0 dBi
VSWR	≤ 2.5 : 1
Polarization	Linear
Impedance	50 Ω
Connector	SMA(M)
Cable Length (Approx.)	2.5 mtr
Dimensions (Approx.)	103.4 mm
Colour	Black
Operating Temperature	-20 °C ~ +60 °C



**Note:** Mounting Hardware and Brackets are supplied with Antenna

**WE ALSO UNDERTAKE DESIGNS PER YOUR REQUIREMENT**



## UMTS Semi Parabolic Grid Antenna CSG 61919 SGPN

PARAMETERS	SPECIFICATIONS
Frequency Range	1920 ~ 2170 MHz
Gain	19.0 dBi
VSWR	$\leq 1.5 : 1$
Horizontal Beam width	13.5°
Vertical Beam width	19°
Front to Back Ratio	$\geq 20$ dB
Polarization	Vertical or Horizontal
Max. Power	100 Watt
Impedance	50 $\Omega$
Connector	N(F)
Diameter (Approx.)	600 mm
Depth (Approx.)	400 mm
Weight (Approx. Including Clamp)	1.9 kg
Rated Wind Velocity	210 km/hr



**Note:** Mounting Hardware and Brackets are supplied with Antenna

**WE ALSO UNDERTAKE DESIGNS PER YOUR REQUIREMENT**